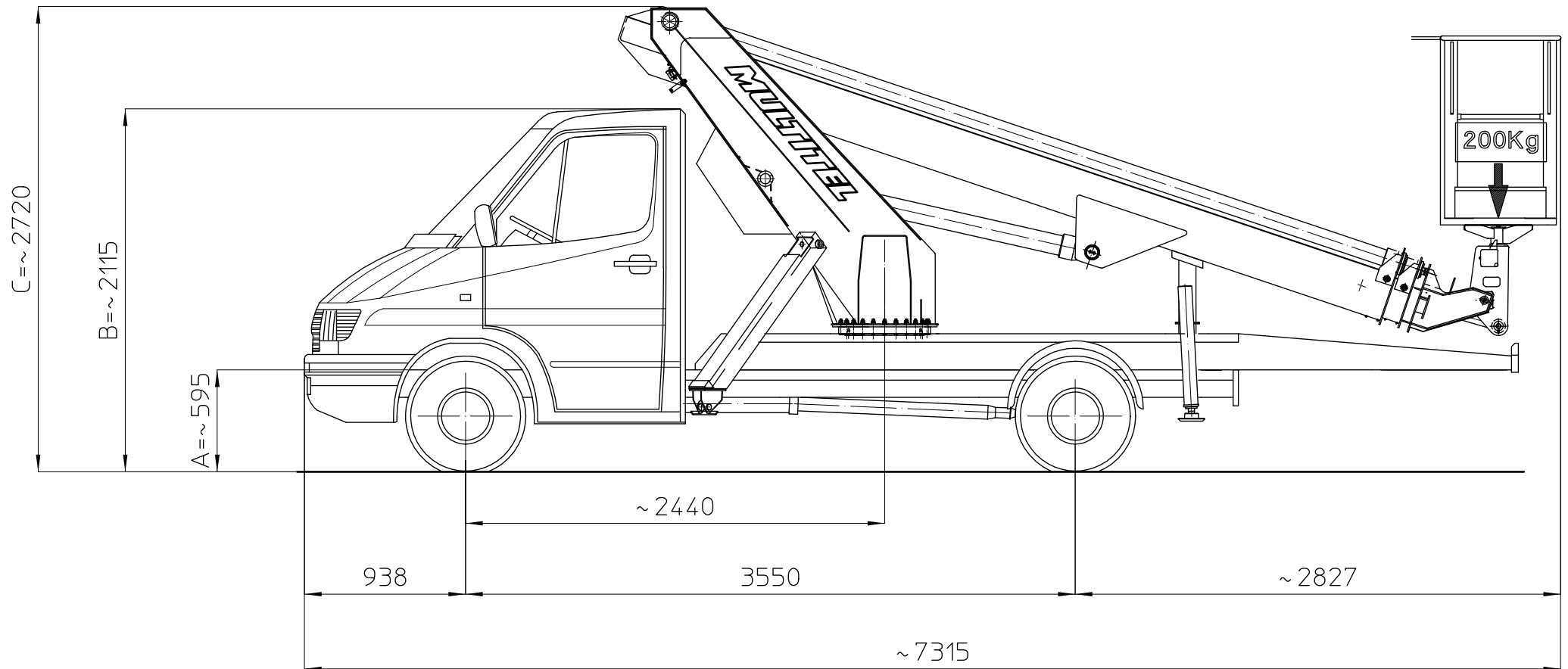


# MULTITEL 180 ALU/AF – MERCEDES 311 C.D.I.

Ente	Rev.	Descrizione	Data	Dis.	Contr.	Ap.AQ
MRK	0	EMISSIONE	07-07-00	W.B.		

D29780



Le quote A-B sono relative alle dimensioni dell'autocarro, quindi devono essere verificate sullo stesso.  
La quota C (altezza totale) e' subordinata alle quote A-B.

Les cotes A-B sont relatives aux dimensions du porteur, donc elles doivent être vérifiées sur le porteur même.  
La cote C (hauteur totale) est subordonnée aux cotes A-B.

The dimensions A-B are related to the truck sizes, therefore they must be verified.  
The dimension C (total height) is subject to A-B.

Die Abmessungen A-B betreffen die Fahrzeugmasse, daher sollen sie geprüft werden.  
Die Abmessung C (Gesamthöhe) hängt von A-B Abmessungen ab.

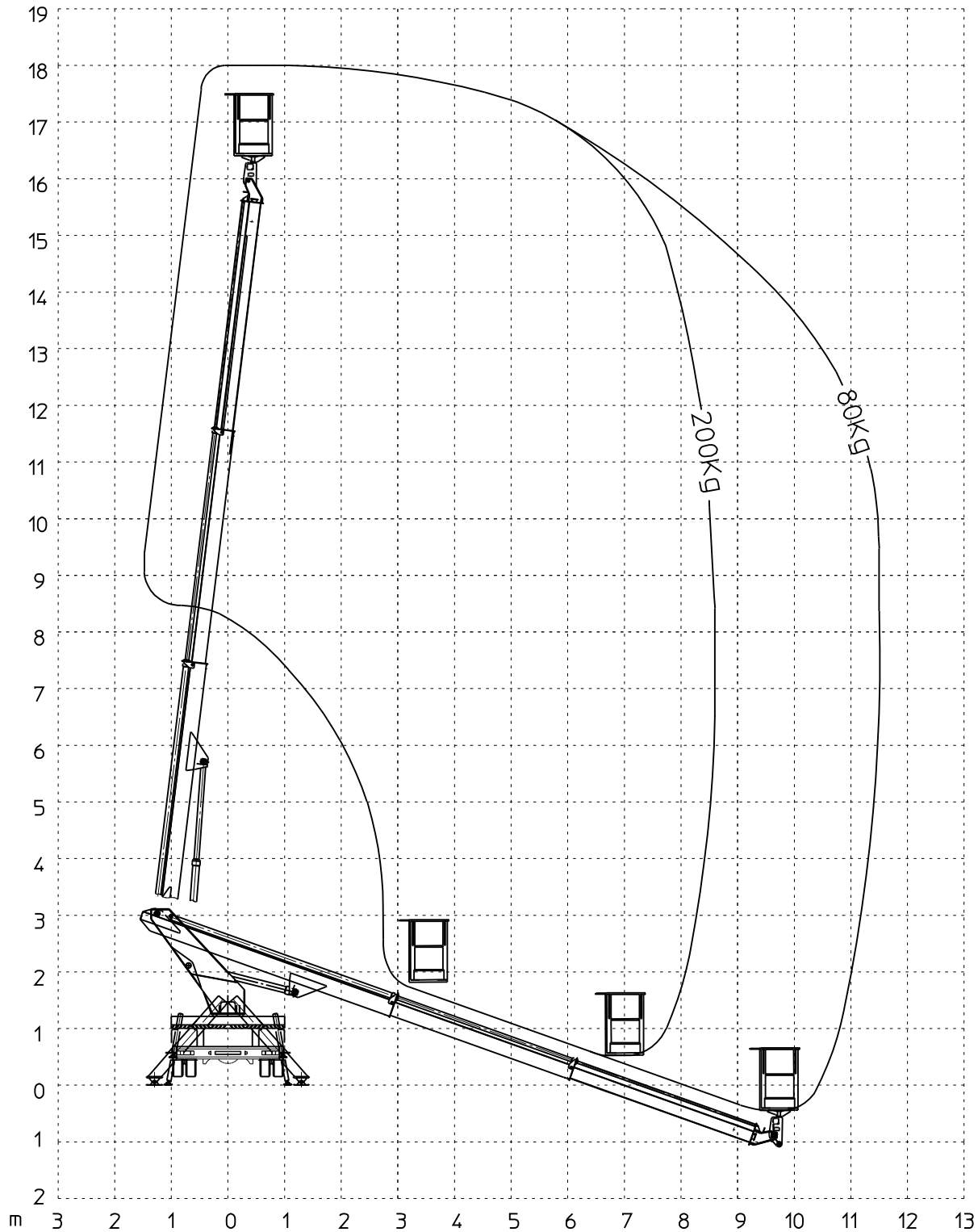
# MULTITEL 180 ALU

Ente	Rev.	Descrizione	Data	Dis.	Contr.	Ap.A0
MRK	0	EMISSIONE	24-10-01	W.B.		
DIAGRAMMA - SCHEDA 54/2 - Rev. 0 - 15/12/00						

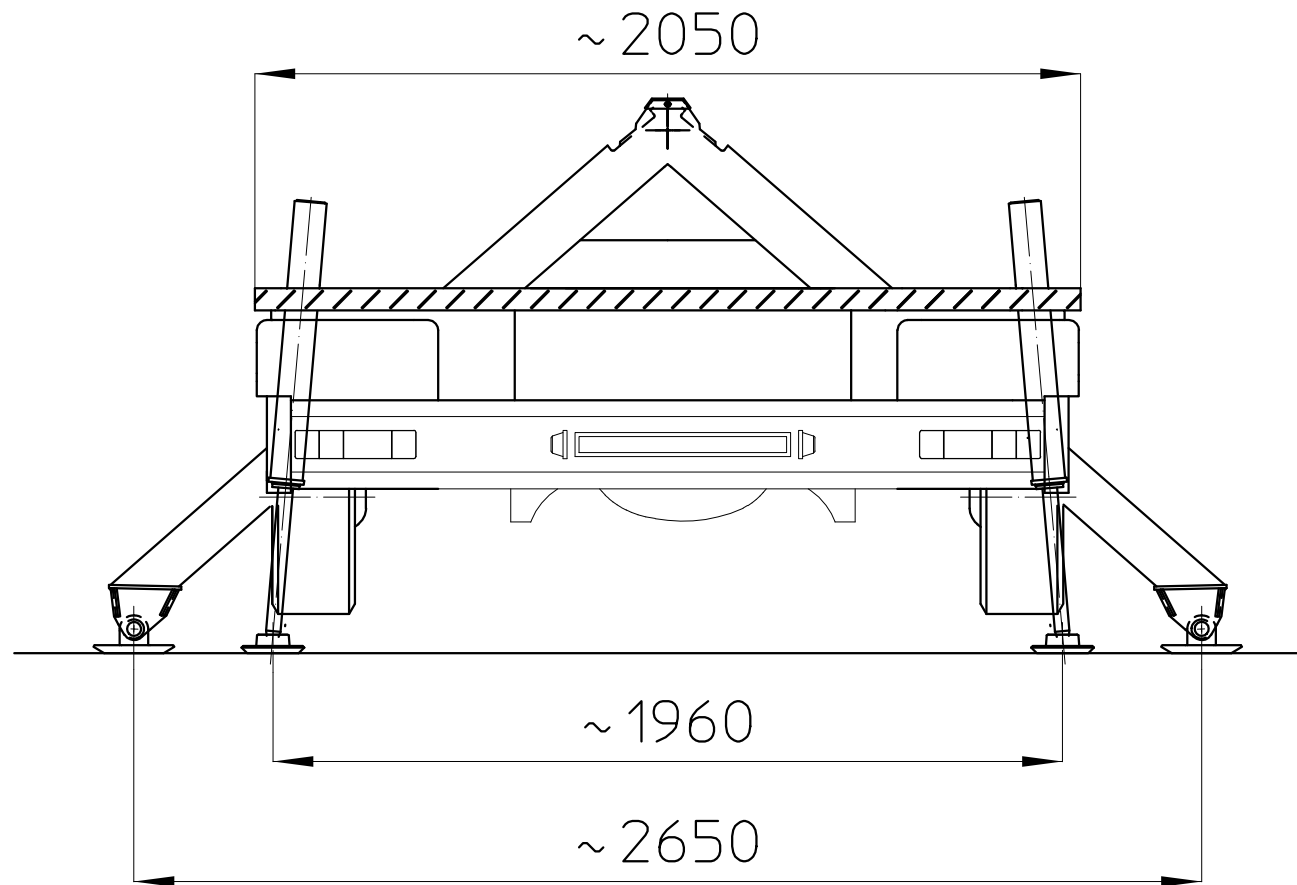
D30102

**200Kg** **80Kg**

SBRACCIO DI LAVORO	8.6 m	11.5 m	±5%
WORKING OUTREACH	8.6 m	11.5 m	±5%
DEPORT DE TRAVAIL	8.6 m	11.5 m	±5%
SEITLICHE REICHWEITE	8.6 m	11.5 m	±5%



# MULTITEL 180-220 ALU/AF - M.B. SPRINTER 308/311 C.D.I.



D30119-S

Ente	Rev.	Descrizione	Data	Dis.	Contr.	Ap.AQ
MRK	0	EMISSIONE	08-03-04	W.B.		
INGOMBRO - SCHEDA 54/1 - Rev. 0 - 15/12/00						